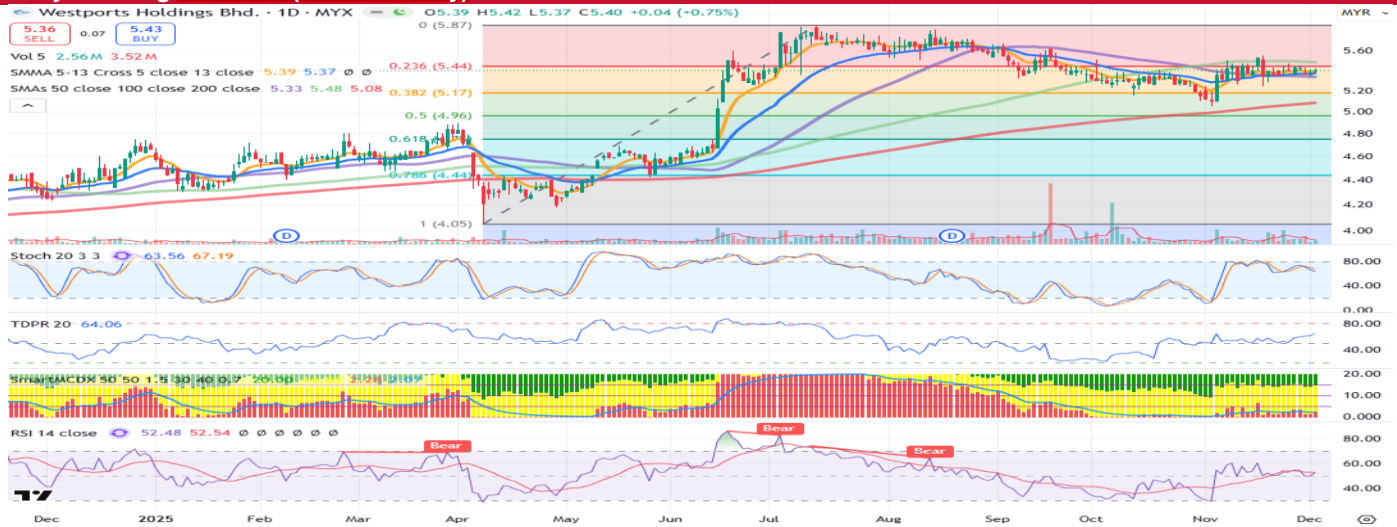


By **Cheow Ming Liang** | [cheowml@kenanga.com.my](mailto:cheowml@kenanga.com.my)

**Actionable Technical Highlights – (WEST PORT BERHAD)**

**Daily Charting – WPRTS (Technical Buy)**



Source: TradingView

About the Stock:		Key Support & Resistance Levels	
<b>Name</b>	WESTPORTS HLDGS BERHAD	<b>52 Week H/L (RM)</b>	5.87/4.05
<b>Bursa Code</b>	WPRTS	<b>3-m Avg. Daily Vol.</b>	5,867,045
<b>CAT Code</b>	5246	<b>Free Float (%)</b>	26
<b>Market Cap</b>	RM18.4b	<b>Beta vs. KLCI</b>	0.6
		<b>Last Price</b>	RM5.40
		<b>Resistance</b>	RM5.48 (R1) RM5.55 (R2)
		<b>Take Profit</b>	RM5.63
		<b>Stop Loss</b>	RM5.15

**WESTPORTS HOLDINGS BERHAD (Technical Buy)**

- WPRTS closed at RM5.40 (+0.75%) and continues to base within a tight RM5.30–5.55 range. The price is riding the 5-day/13-day belt (RM5.37–5.39) and holding above the 50-day SMA (RM5.33). The convergence of the short- to medium-term SMAs points to an imminent technical breakout in the coming days; however, the 100-day SMA at RM5.48 may serve as immediate resistance. The weekly chart mirrors this constructive setup and is beginning to turn higher, reinforcing a rebound bias.
- Stochastic is hovering in the 60–70 band, signalling steady momentum; TDPR is firming near the upper mid-zone, indicating buying pressure rebuilding; and RSI staying above 50 corroborates an ongoing basing phase. A tight cluster of small-bodied/inside bars candlestick formed over the past week points to volatility compression— a range break should dictate the next directional move.
- Immediate resistance is at RM5.48 (100-day SMA), followed by RM5.55 and RM5.63. Key supports are RM5.37–5.33 (13-day/50-day belt), with deeper cushions at RM5.17 (38.2% Fibonacci) and RM5.08 (200-day SMA).
- Accumulate on dips at RM5.33–5.38 with TP1 set at RM5.48 and TP2 at RM5.63 on a clean breakout. Cut loss below RM5.15 (decisive break of the Fibonacci shelf). This implies c.2%–5% upside to TP1/TP2 vs. c.4% downside, offering a balanced risk–reward if the base holds.

This document has been prepared for general circulation based on information obtained from sources believed to be reliable but we do not make any representations as to its accuracy or completeness. Any recommendation contained in this document does not have regard to the specific investment objectives, financial situation and the particular needs of any specific person who may read this document. This document is for the information of addressees only and is not to be taken in substitution for the exercise of judgement by addressees. Kenanga Investment Bank Berhad accepts no liability whatsoever for any direct or consequential loss arising from any use of this document or any solicitations of an offer to buy or sell any securities. Kenanga Investment Bank Berhad and its associates, their directors, and/or employees may have positions in, and may effect transactions in securities mentioned herein from time to time in the open market or otherwise, and may receive brokerage fees or act as principal or agent in dealings with respect to these companies. Kenanga Investment Bank Berhad being a full-service investment bank offers investment banking products and services and acts as issuer and liquidity provider with respect to a security that may also fall under its research coverage.

Published by:

**KENANGA INVESTMENT BANK BERHAD (15678-H)**

Level 17, Kenanga Tower, 237, Jalan Tun Razak, 50400 Kuala Lumpur, Malaysia

Telephone: (603) 2172 0880 Website: [www.kenanga.com.my](http://www.kenanga.com.my) E-mail: [research@kenanga.com.my](mailto:research@kenanga.com.my)